

Duplex For Lease in Candler Park

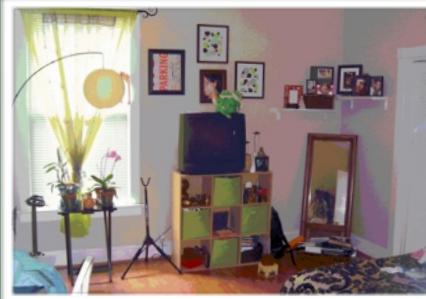
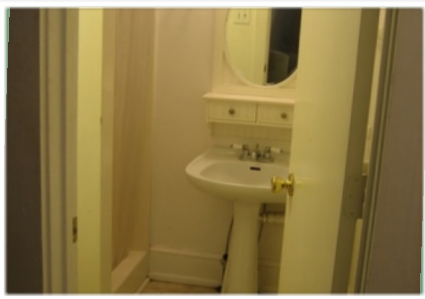
Available Now

340 A Josephine St.

\$1195 / Mo.



LOCATION! LOCATION! This updated duplex (main level) is within walking distance to all that Candler Park/Little 5 has to offer. The main level for rent has a secured entry foyer, off street parking, small yard and fabulous enormous party deck (shared by tenant upstairs). It features 2 bedrooms, a full bath off hallway and a full bath off the 2nd bedroom. In the full bathroom there is a stackable washer and dryer along with a tub/shower combo, and low-flow fixtures. The separate living room has hardwood floors, lots of light and opens to the eat-in kitchen which includes a stove, dishwasher, and refrigerator. The entrance to the back yard and deck is off the kitchen, there is also plenty of storage space under the house and under the deck. The backyard is fully fenced in and a med. pet is allowed with an additional \$250 pet fee. Tenants pay for gas, power, cable, 1/2 water and owner takes care of lawn upkeep. Good credit, rental history and verifiable income are required. \$45 app. fee per person, the security deposit is one month's rent. 1 year lease.



- ▶ 2 bedrooms (freshly painted)
- ▶ 2 bathrooms, one off bedroom with stack washer and dryer
- ▶ Separate living room, hard wood floors, freshly painted
- ▶ Eat in kitchen with access to back deck and yard
- ▶ Enormous back deck and fenced in yard
- ▶ Entry foyer, off street parking



www.nancyguss.com
www.14west.com

Nancy Harrison Guss
Life Member Million Dollar Club
Office: 404.874.6357 x237
Mobile: 404.550.9282
Fax: 404.874.2751
Email: NGuss@14West.com